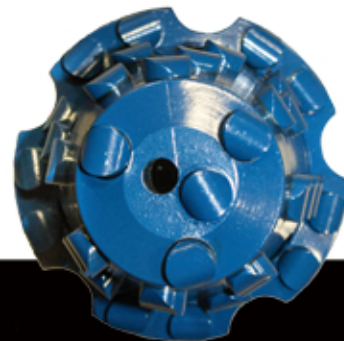




Aardvark Mill

Full body tapered mill recommended for milling high pressure composite plugs. Can also be used for cement and cast iron milling.



- *Bodies manufactured from 4140 HT steel.
- *Unique design for rapid milling of composite plugs.
- *Can be used for milling multiple plugs (from 1-20)
- *Special grades of carbide inserts for durability.
- *Full body design (no fishing for lost cones).
- *Bodies manufactured from 4140 HT steel.
- *CNC machined bodies and threads for accuracy.
- *Carbide inserts range in size from 5/16" to 5/8".
- *Circulation ports from 5/16" to 1" for reverse circulation.
- *Weight and RPM can be adjusted for maximum penetration rates without bearing failures or damage to mill.
- *Mill sizes from 1 3/4" to 8 3/4" in 1/8" increments with custom sizes available.

Recommended WOB 4000 – 6000 (can be adjusted as needed)

RPM - 80 – 100 400 motor

Make up torque (Ft.-Lbs.) 2 3/8 API Reg 3000-5000;

2 7/8 API Reg 6000 -7000; 3 1/2 API Reg 7000-9000; 4 1/2 API Reg 12000-16000

Delivering Worldwide Since 2006

KC Bit & Supply, LLC
sales@kcbits.com

www.kcbits.com
940-839-8857